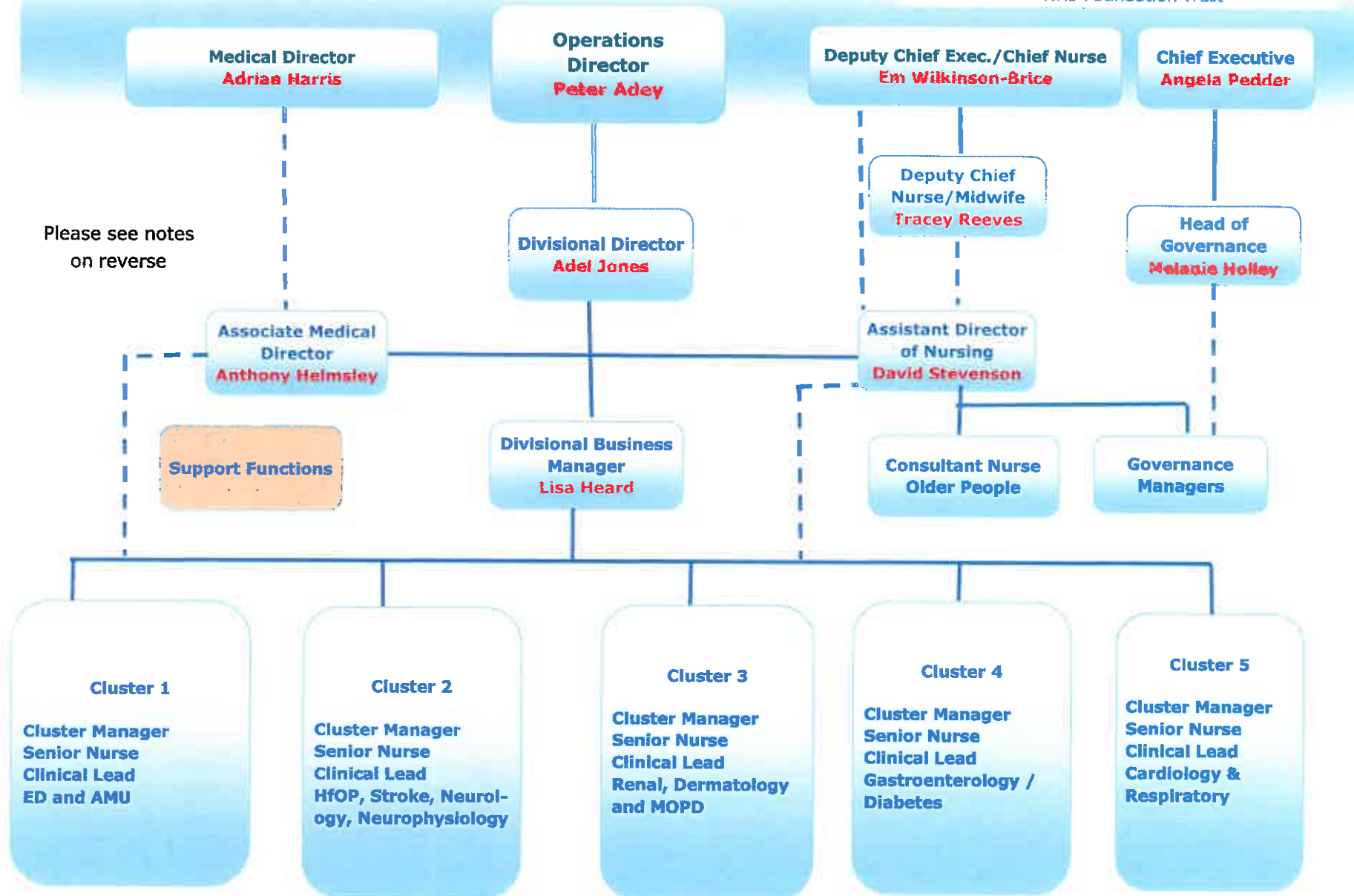


Medical Services Division



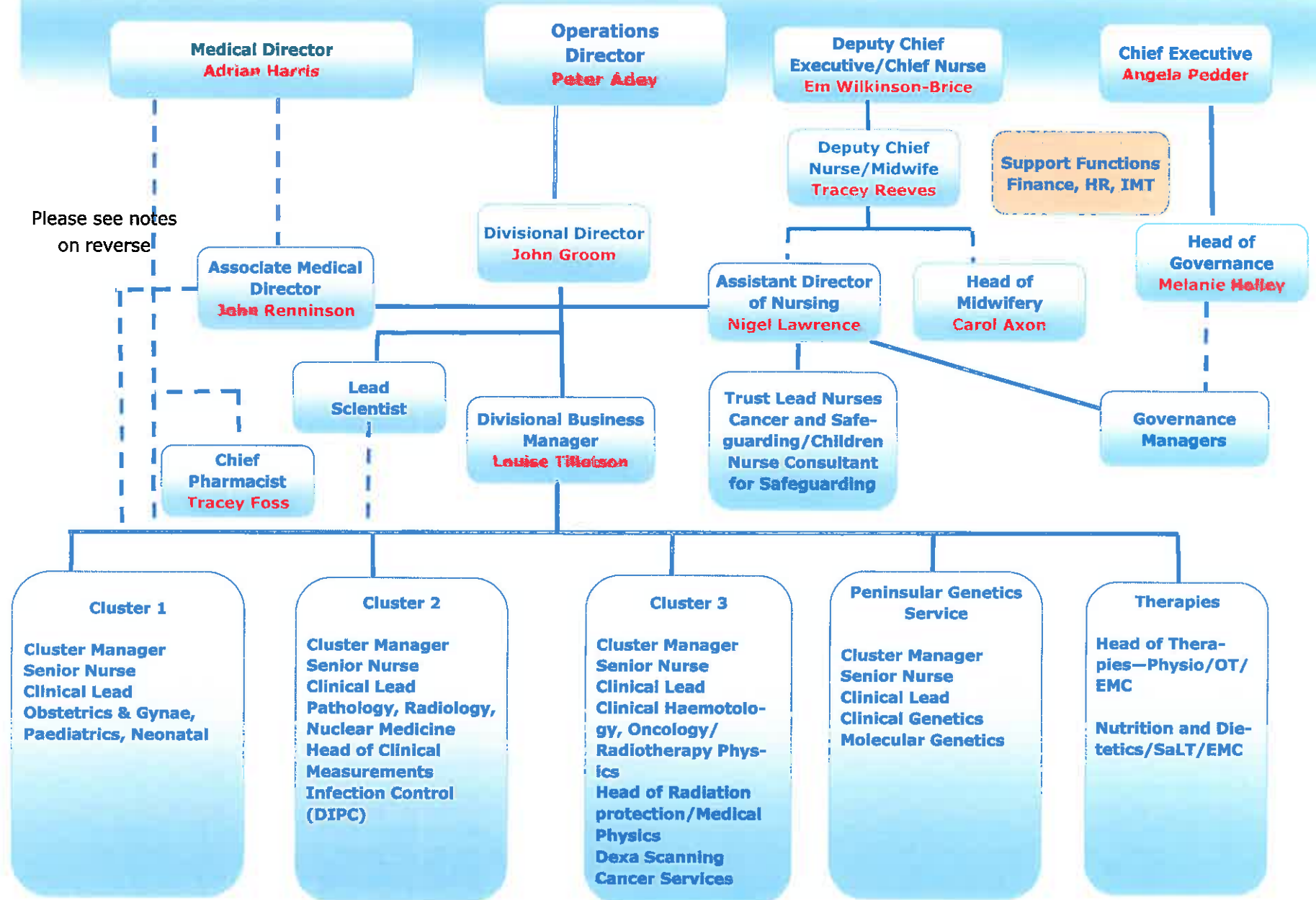
Please see notes on reverse

————— Managerial Accountability

- - - - - Professional Accountability

Notes:

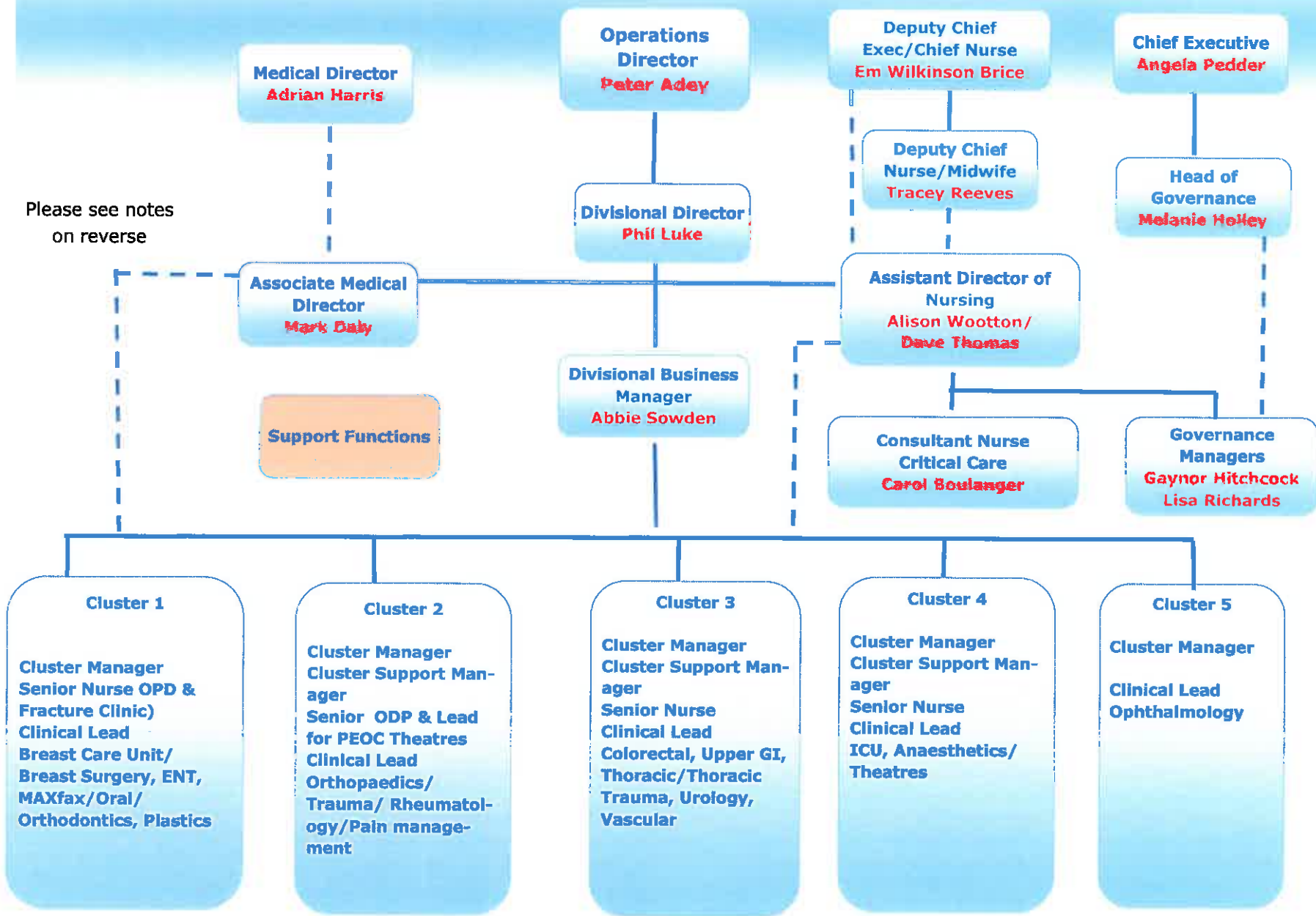
- Cluster Managers are the managerial lead for each Cluster
- Clinical Leads professionally accountable to Associate Medical Director
- Senior Nurses professionally accountable to Assistant Director of Nursing
- Matrons line managed by Senior Nurses
- Nurses line managed by Matrons
- *Head of Governance currently reports direct to CEO



Notes:

- Cluster Managers are the managerial lead for each Cluster
- Clinical Leads professionally accountable to Associate Medical Director
- Heads of Departments professionally accountable to Lead Scientist
- Head of Therapies professionally accountable to Associate Director of Midwifery and Patient Experience and Engagement
- Chief Pharmacist reports to DBM, professional accountability to Medical Director
- Senior Nurse/Midwives professionally accountable to Associate Director of Midwifery & Patient Experience & Engagement
- DIPC is professionally accountable to Medical Director as lead executive for hospital acquired infection
- Matrons line managed by Senior Nurses
- Nurses line managed by Matrons
- *Head of Governance currently reports director to CEO

Surgical Services Division



Please see notes on reverse

Managerial Accountability

Professional Accountability

Notes:

- Cluster Managers are the managerial lead for each Cluster
- Clinical Leads professionally accountable to Associated Medical Director
- Senior Nurses professionally accountable to Assistant Director of Nursing
- Matrons line managed by Senior Nurses
- Nurses line managed by Matrons
- *Head of Governance currently reports direct to CEO